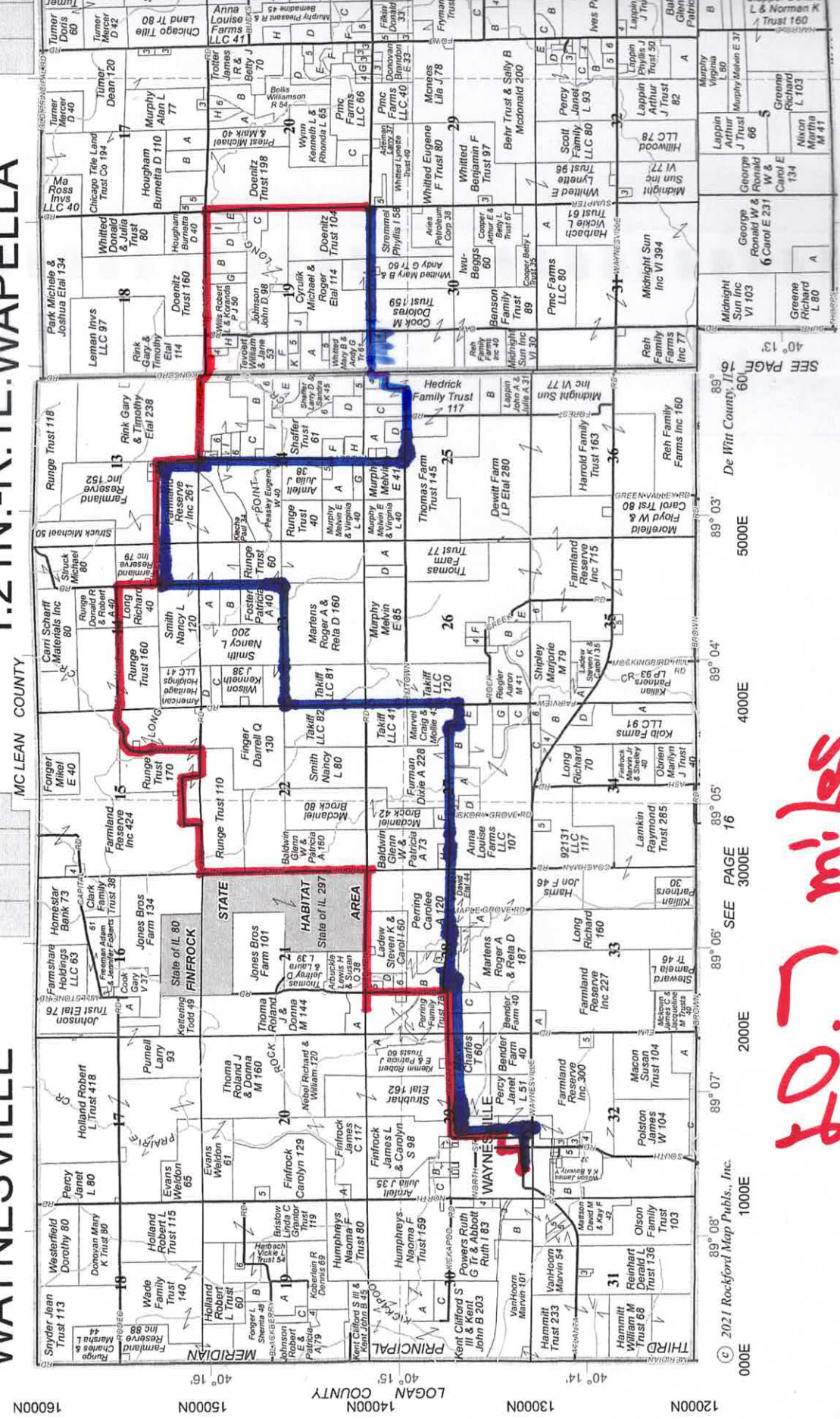


Refer to page 40 for keyed parcels

T.21N.-R.1E.WAPELLA

WAYNESVILLE



16000N 15000N 14000N 13000N 12000N

40° 16' 40° 15' 40° 14' 40° 13' 40° 12'

MC LEAN COUNTY LOGAN COUNTY WAYNESVILLE

10.7 miles

89° 08' 89° 07' 89° 06' 89° 05' 89° 04' 89° 03' 89° 02' 89° 01'

000E 1000E 2000E 3000E 4000E 5000E 6000E 7000E 8000E

© 2021 Rockford Map Publs., Inc.

SEE PAGE 16

De Witt County, Ill.

SEE PAGE 16

© 2021 Rockford Map Publs., Inc.